



Ieva Kalniņa
kalnina.ieva@riga.lv
Riga Energy Agency
www.rea.riga.lv

What is the circular economy?

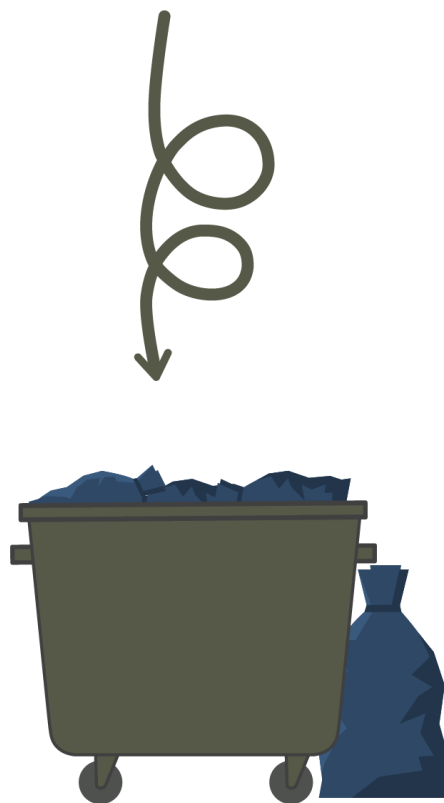
The circular economy is a sustainable development model, the essence of which is to preserve, **enhance** and retain **the value** of products, materials and resources in the economy for as long as possible, while reducing both the consumption of raw materials and the amount of waste, as well as the impact on the environment.

Aprites ekonomika

LINEĀRĀ
EKONOMIKA

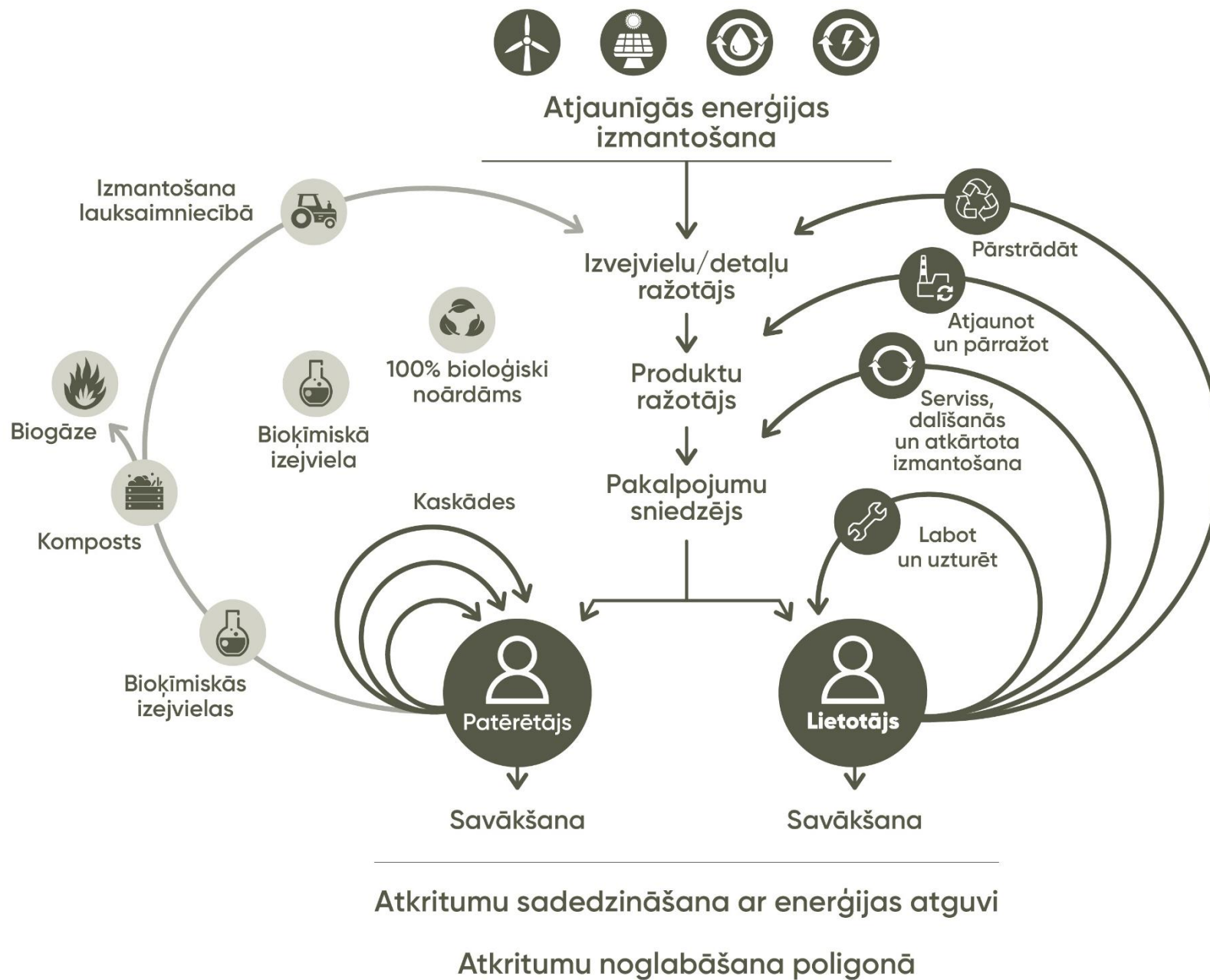


PĀRSTRĀDES
EKONOMIKA



APRITES
EKONOMIKA





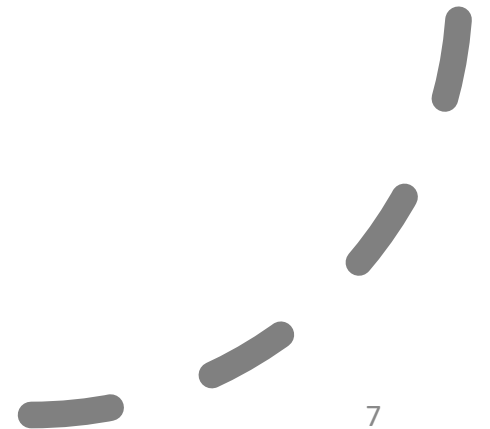
80 %

**of the environmental impact of the
product is determined by the decisions
made during the design phase**

(Ellen MacArthur Foundation, 2022)

The role of local government in the transition to a circular economy

- Mobilize
- Stimulate
- Educate
- Regulate
- Manage





Circular economy projects in Riga

- Circular cultural place in Bolderāja library garden
- Circular Economy Forum 2025
- Circular economy strategy
- Circular Economy Action Plan 2026-2030
- Deposit system for public events
- Development of Sadarbnīca and various events
- Public competitions
- Innovative procurements
- Cooperation with associations, schools and universities



Circular Economy Index 2024

Riga City Municipality –
Leader of the Group of
Practitioners

City Resource Centres

are places that promote the circular economy at local level.

These are multifunctional sites where the waste hierarchy is correctly implemented, emphasizing the social, economic and environmental functions of the circular economy.

The centres differ in size and location, as well as in their organisational structure, sources and objectives of funding.



RIGA ENERGY
AGENCY



ΔΗΜΟΣ ΚΑΒΑΛΑΣ



Amsterdam University
of Applied Sciences

U ELISAVA

UNIVERSITAT DE VIC
UNIVERSITAT CENTRAL DE CATALUNYA

TARTU

Supported by:



Federal Ministry
for Economic Affairs
and Climate Action



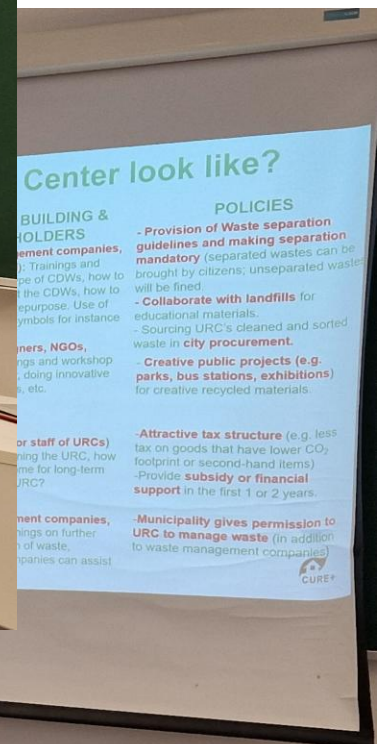
European
Climate Initiative
EUKI

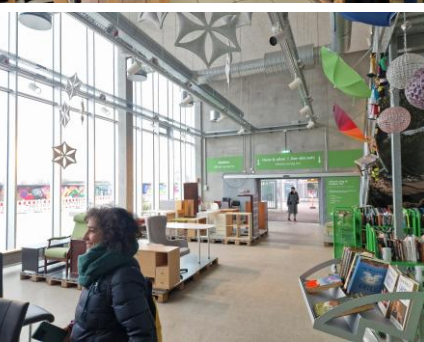
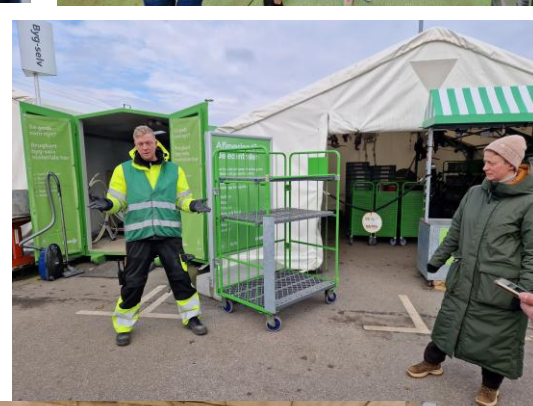
on the basis of a decision
by the German Bundestag



CURE+

CENTRES FOR URBAN RESOURCES,
REUSE AND REMANUFACTURE







Kavala



Barselona



Tartu



zini & dari KOPĀ

Sadarbnīca is a place for...

- Demonstration and development of the circular economy
- Implementation of the Circular Economy Action Plan
- Development of pilot projects and new initiatives
- Collaboration platform
- Information and non-formal education
- Practicing the circular economy
- Skills development

Practice what you preach

How to set up the circular economy centre according to the principles of the circular economy?

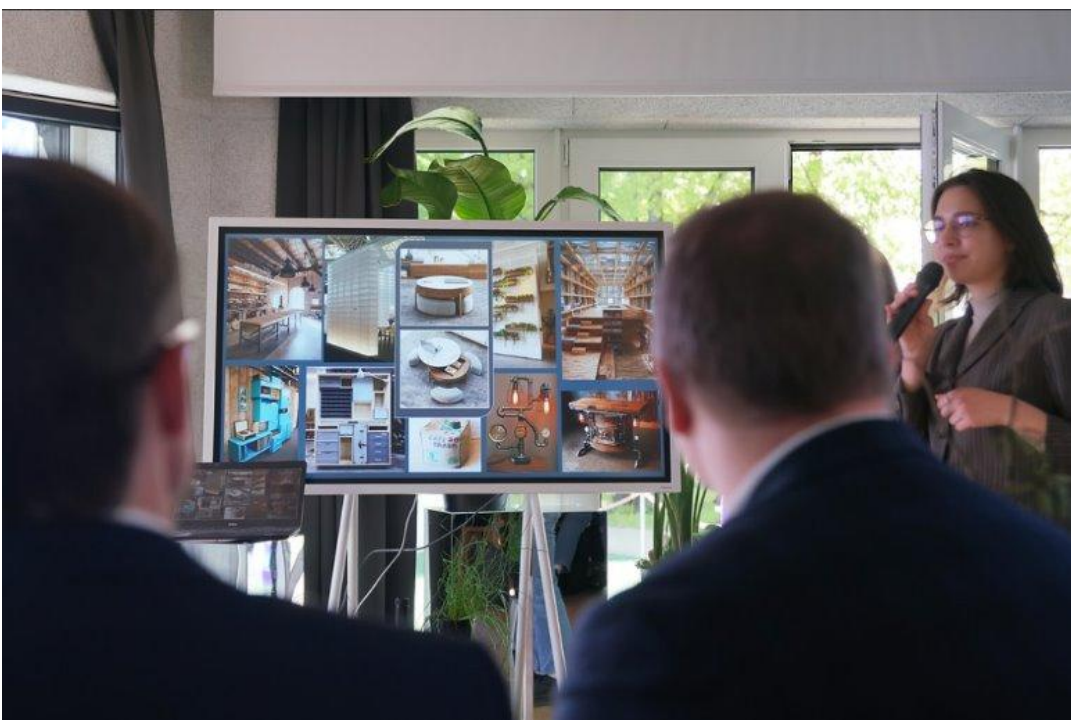
And what about the New European Bauhaus approach?

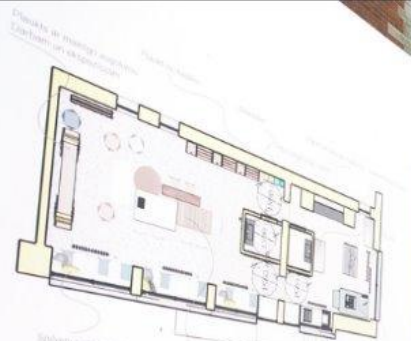
Aprites ekonomikas centrs iegūst mūsdienīgus interjera risinājumus



Piektdien, 3. maijā, vides objektā "Šūna" rīdzinieki pirmo reizi tika iepazīstināti ar aprites ekonomikas centra koncepciju un praktisku tā veidošanu Rīgā.

Latvijā ir ļoti daudz resursu, kas netiek lietderīgi izmantoti, bieži vien vēl noderīgas lietas tiek nodotas atkritumos. Daudzām lietām var piešķirt otro elpu – pagarināt to lietošanas ilgumu. Daudzi rīdzinieki aptaujās ir izteikuši vēlmi paši labot un remontēt, diemžēl pilsētvidē







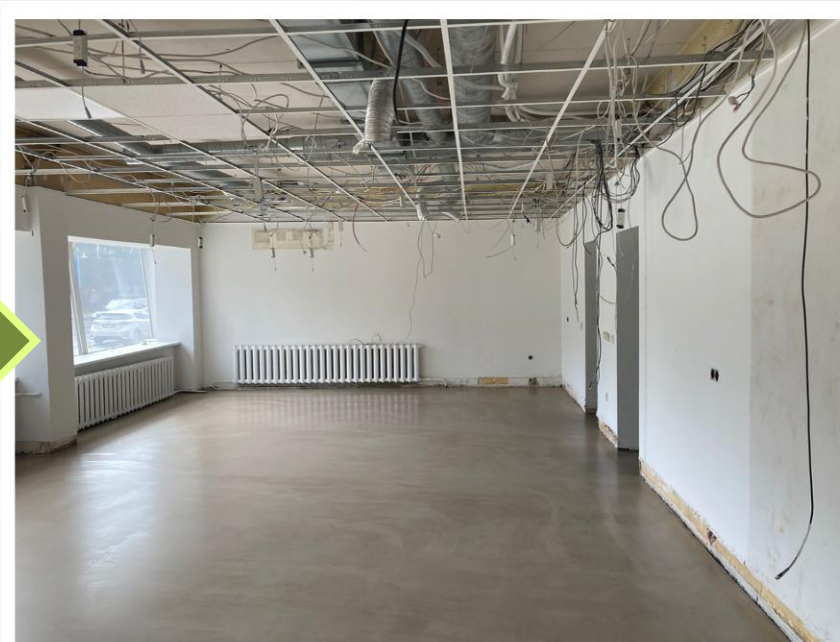




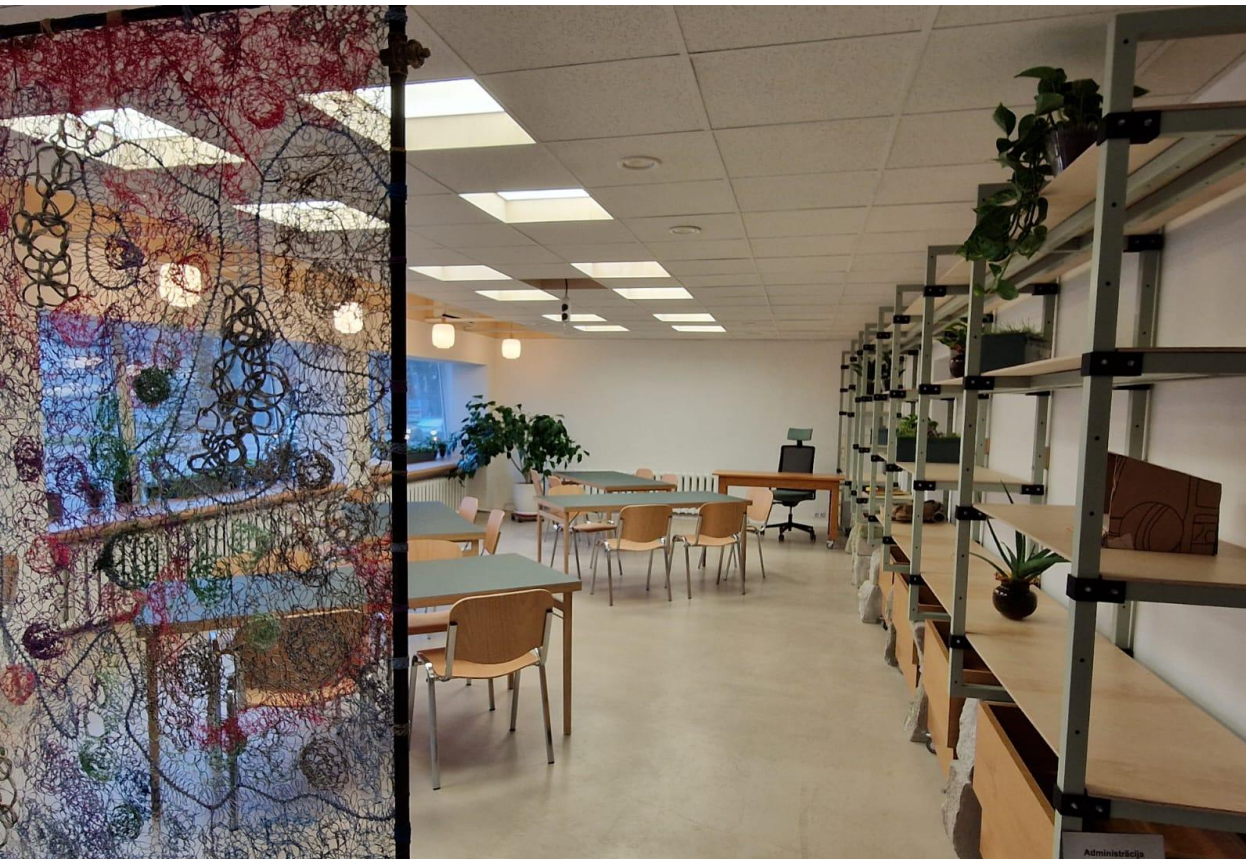
















**What circular solutions are included
in the interior of the Sadarbnīca?**

Next presentation→



Avots: <http://thomasrau.eu/en/>

www.rea.riga.lv/sadarbnica
sadarbnica@riga.lv

"**Sustainability** [the circular economy] is not about certification, products or solutions, **it's about the attitude** towards everything that makes our lives on the planet possible. It's very simple."

Architect Thomas Rau